

CUADERNILLO

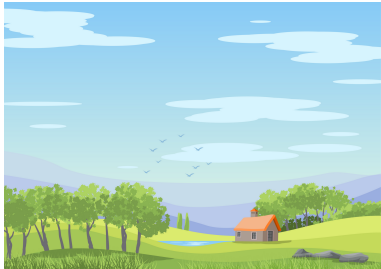

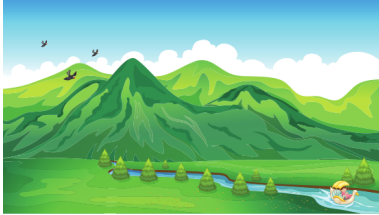
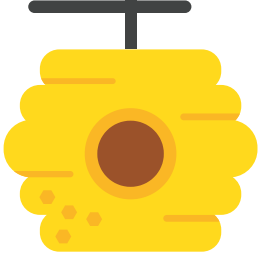
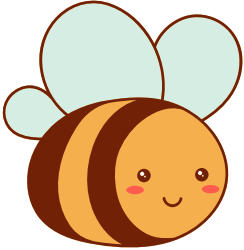
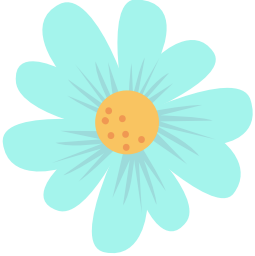
TRABAJO POR PROYECTOS "LA ABEJA"







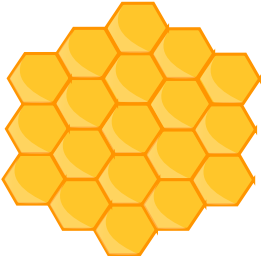
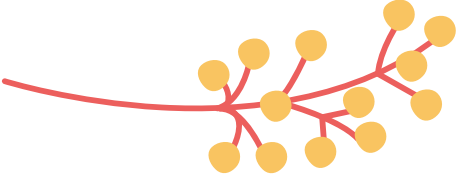


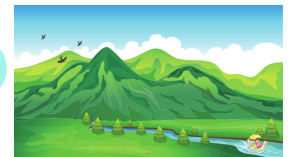
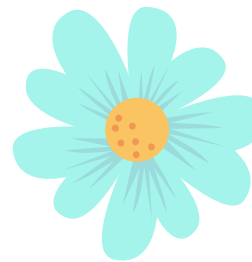
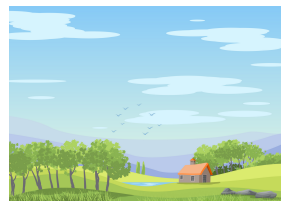
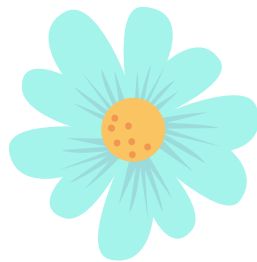
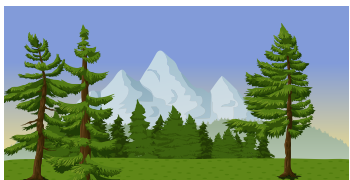
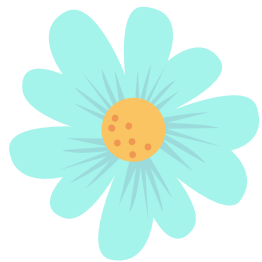
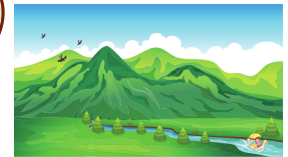
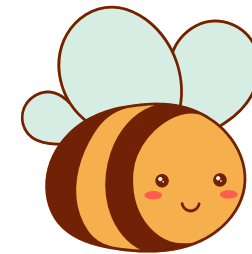
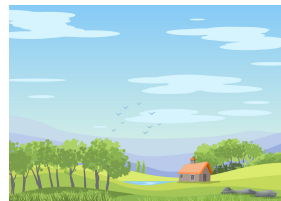
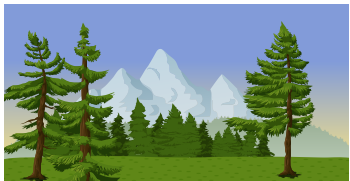
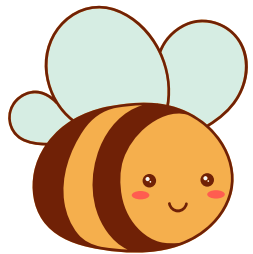
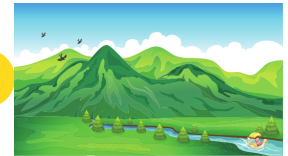
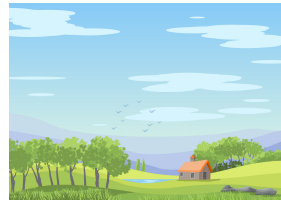
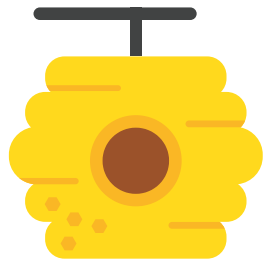
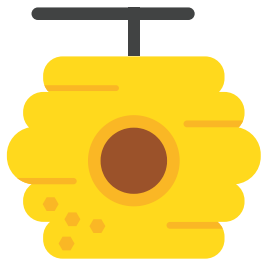
CUADROS DE DOBLE ENTRADA

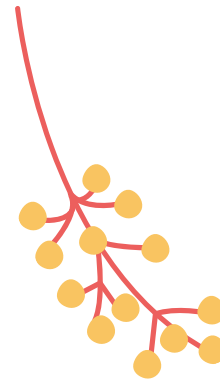
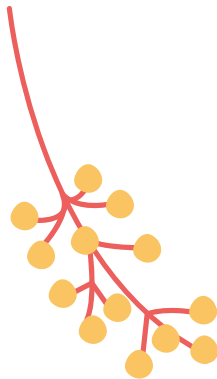
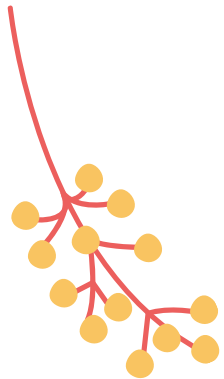
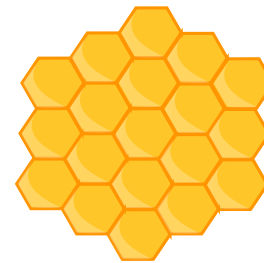
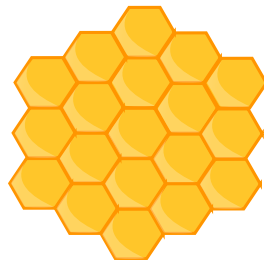
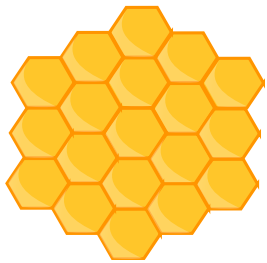
Completa la tabla

Completa la tabla

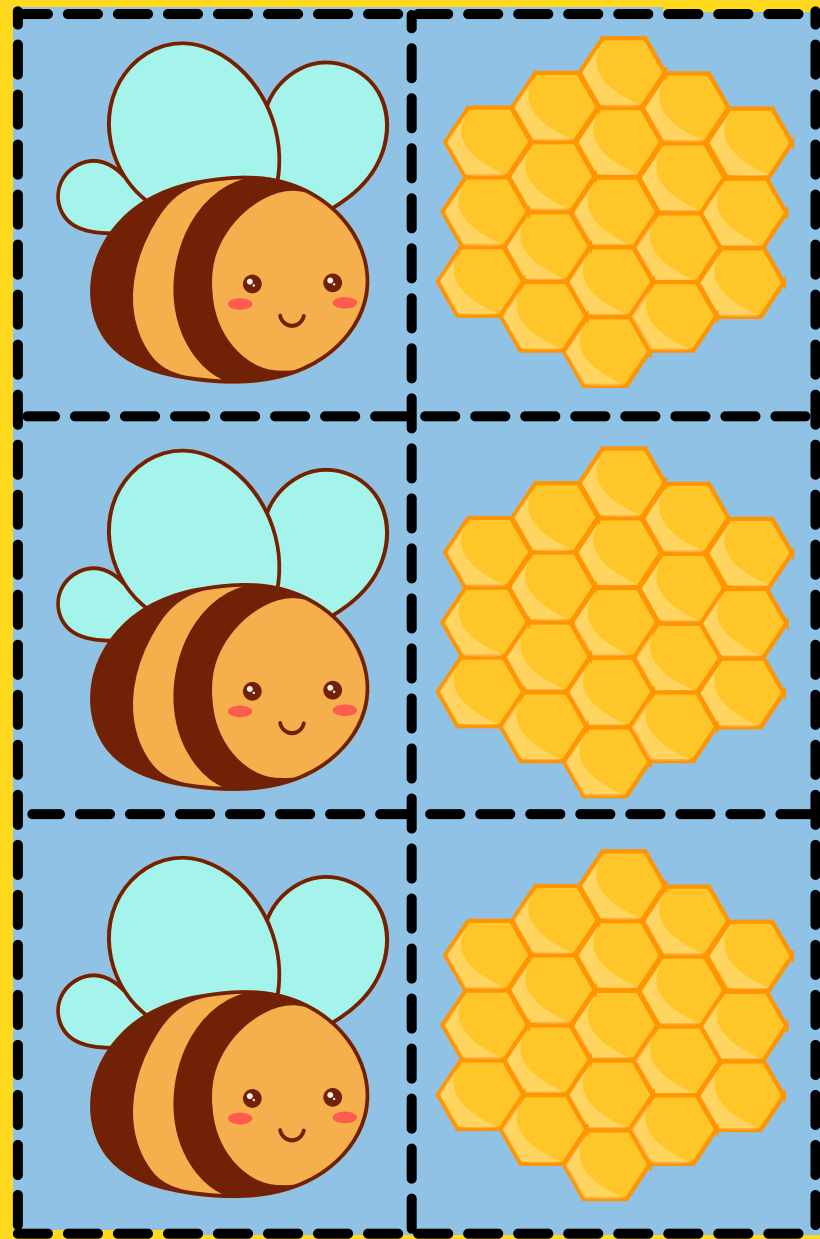
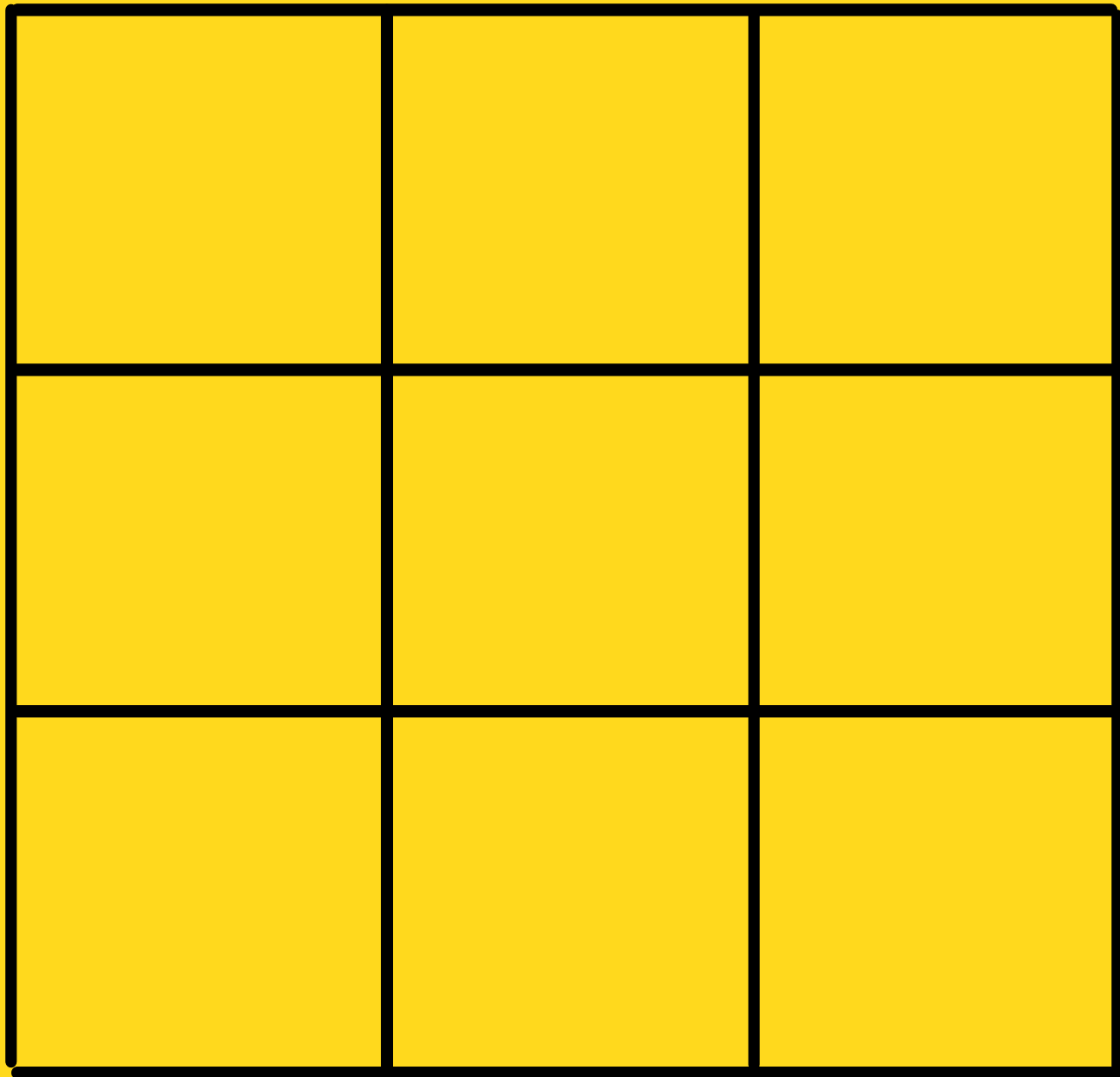
			
			
			
			

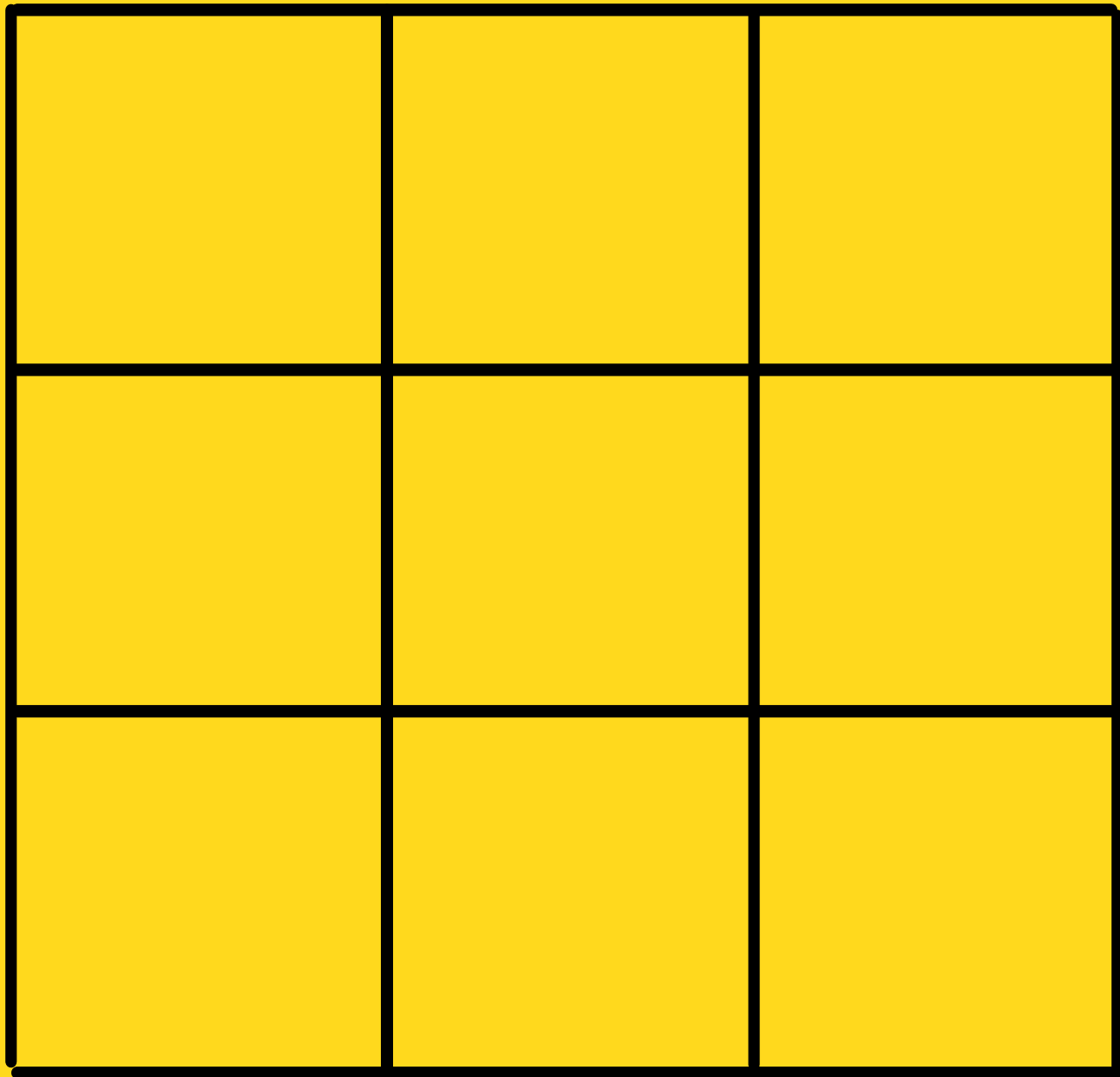


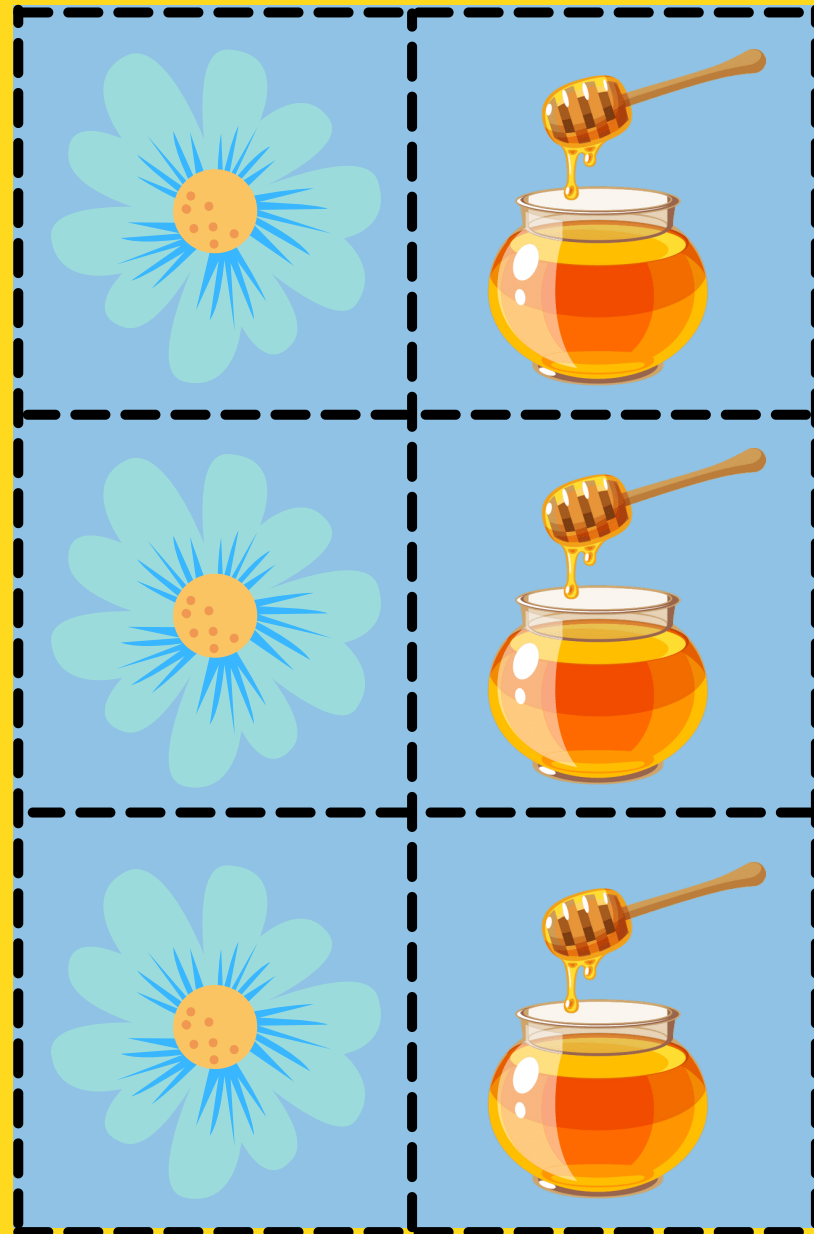
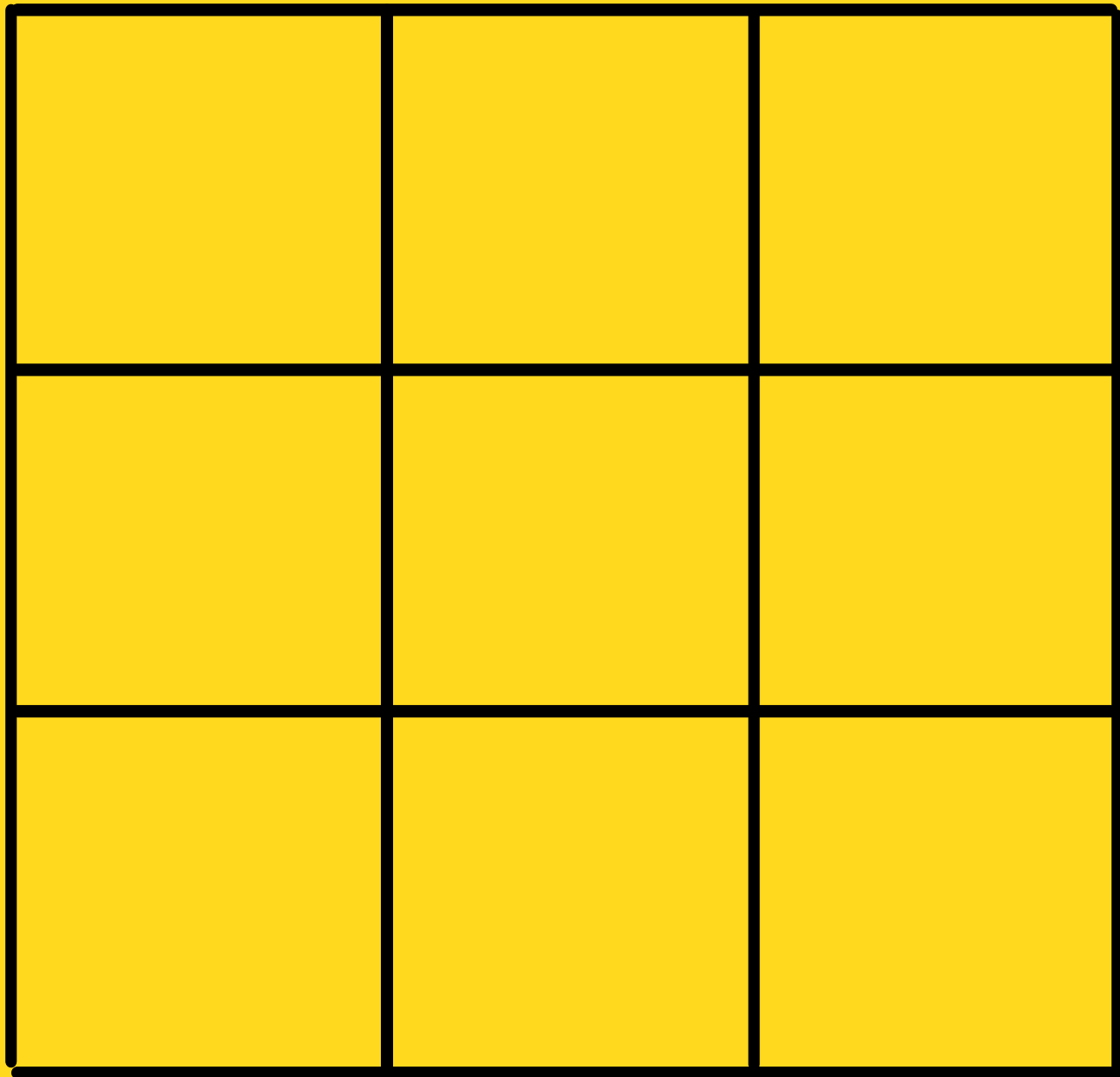


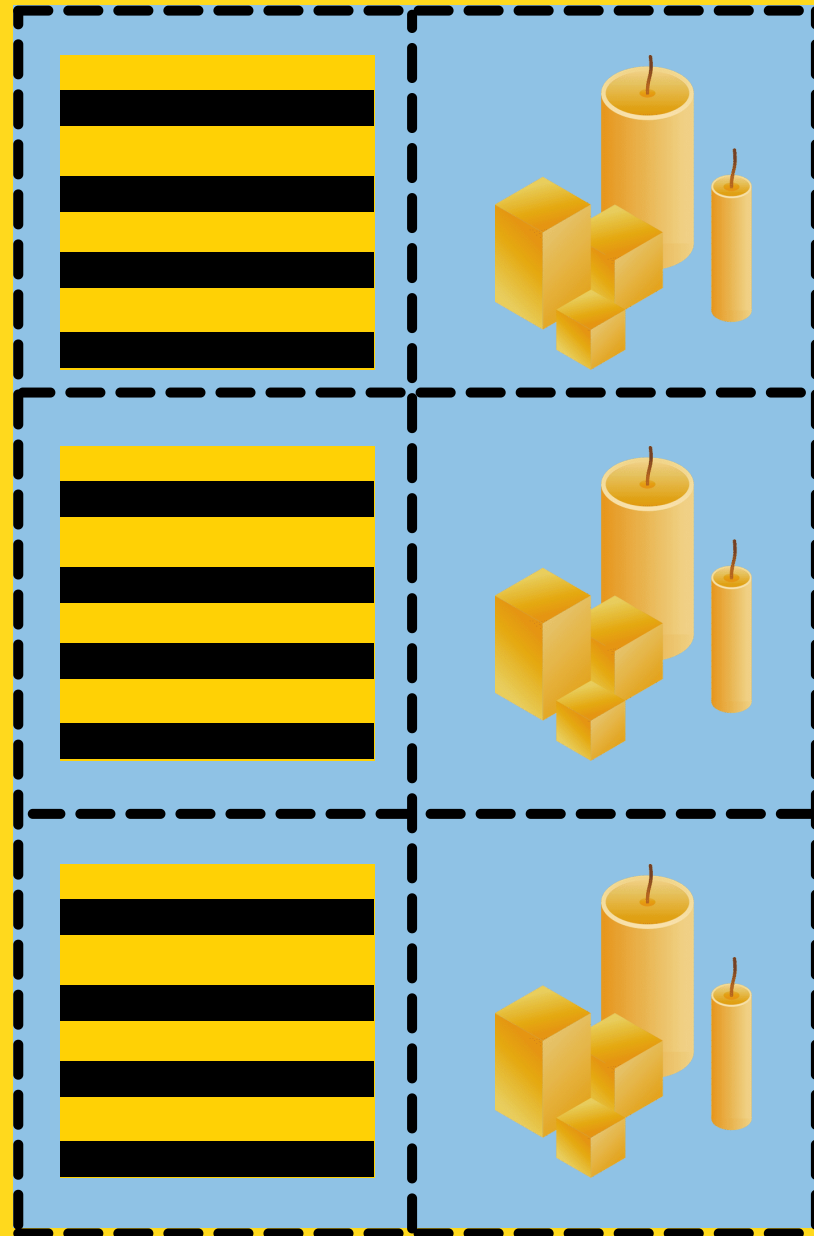
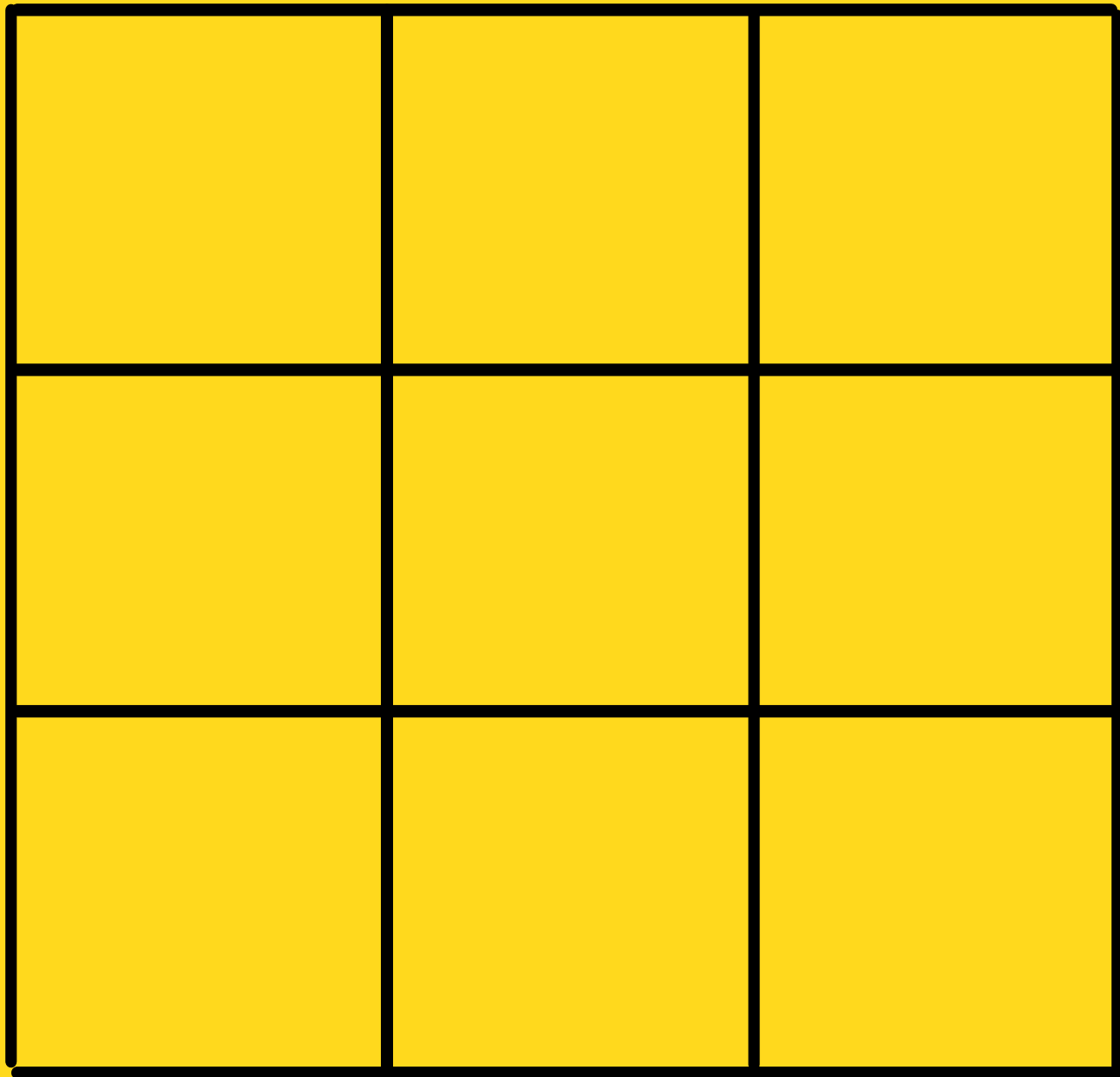
The background is a solid yellow color with a repeating pattern of cartoon bees. Each bee is yellow with black stripes on its abdomen, a black head with two antennae, and four white wings with black veins. The bees are scattered across the page, some facing left and some facing right.

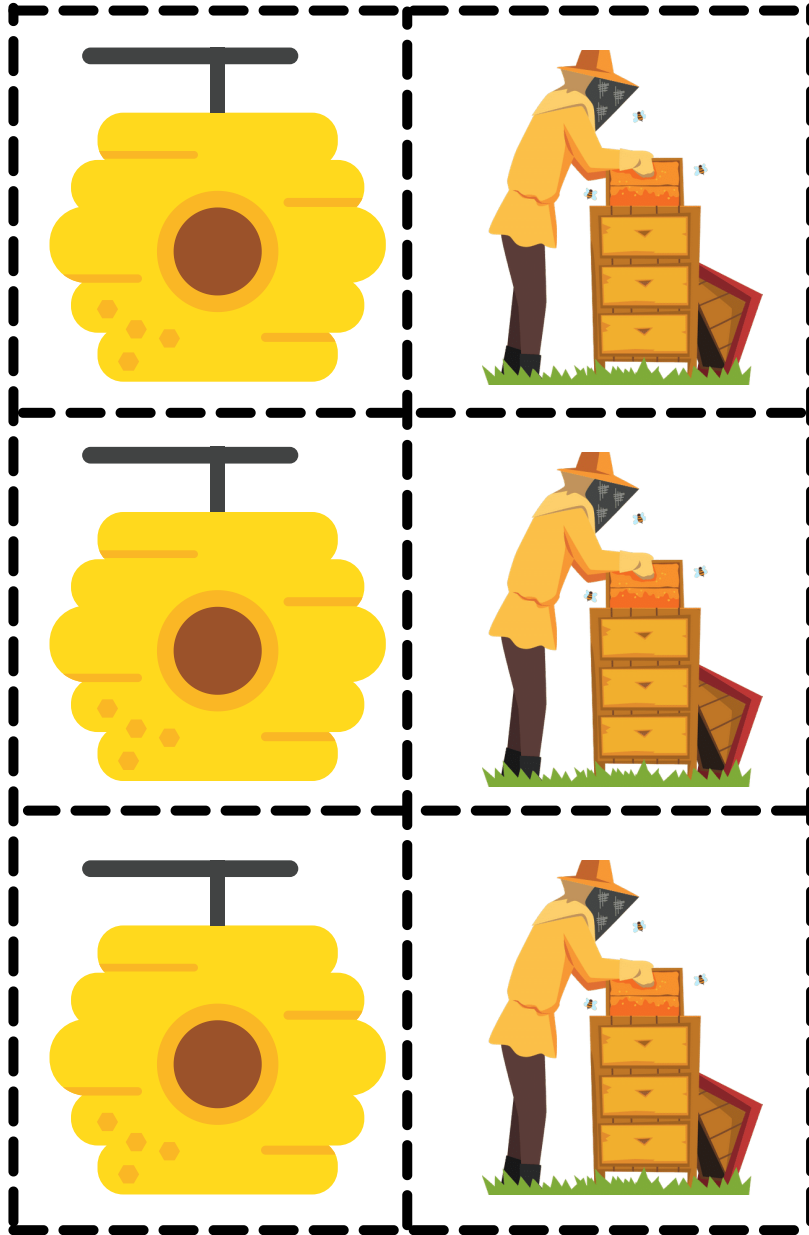
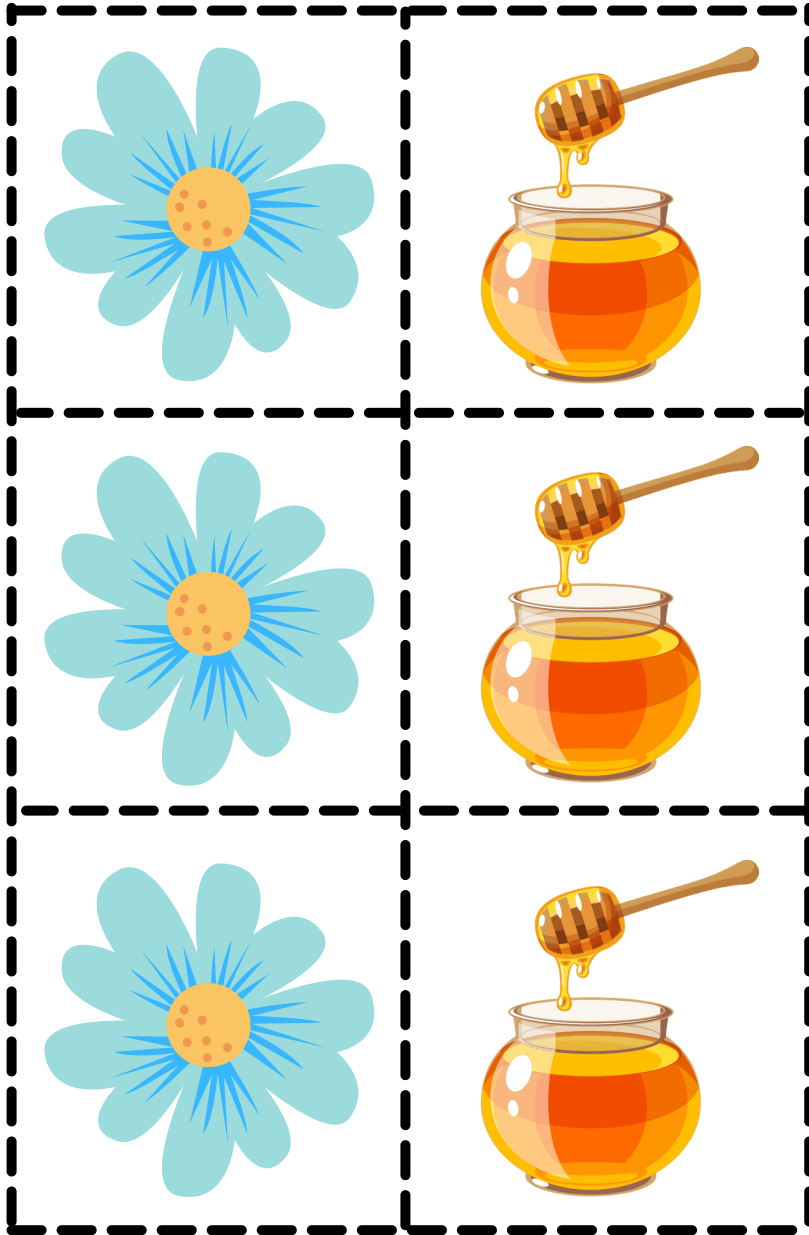
TRES EN RAYA

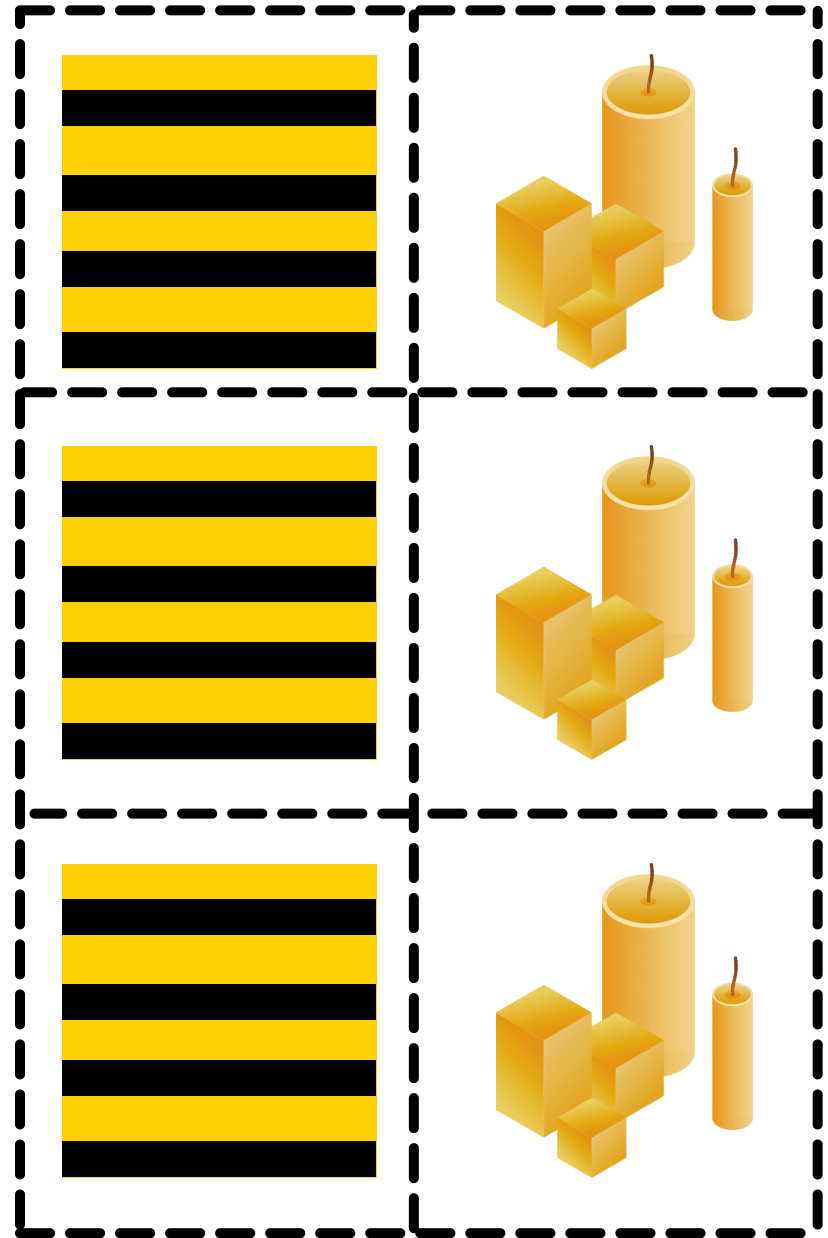
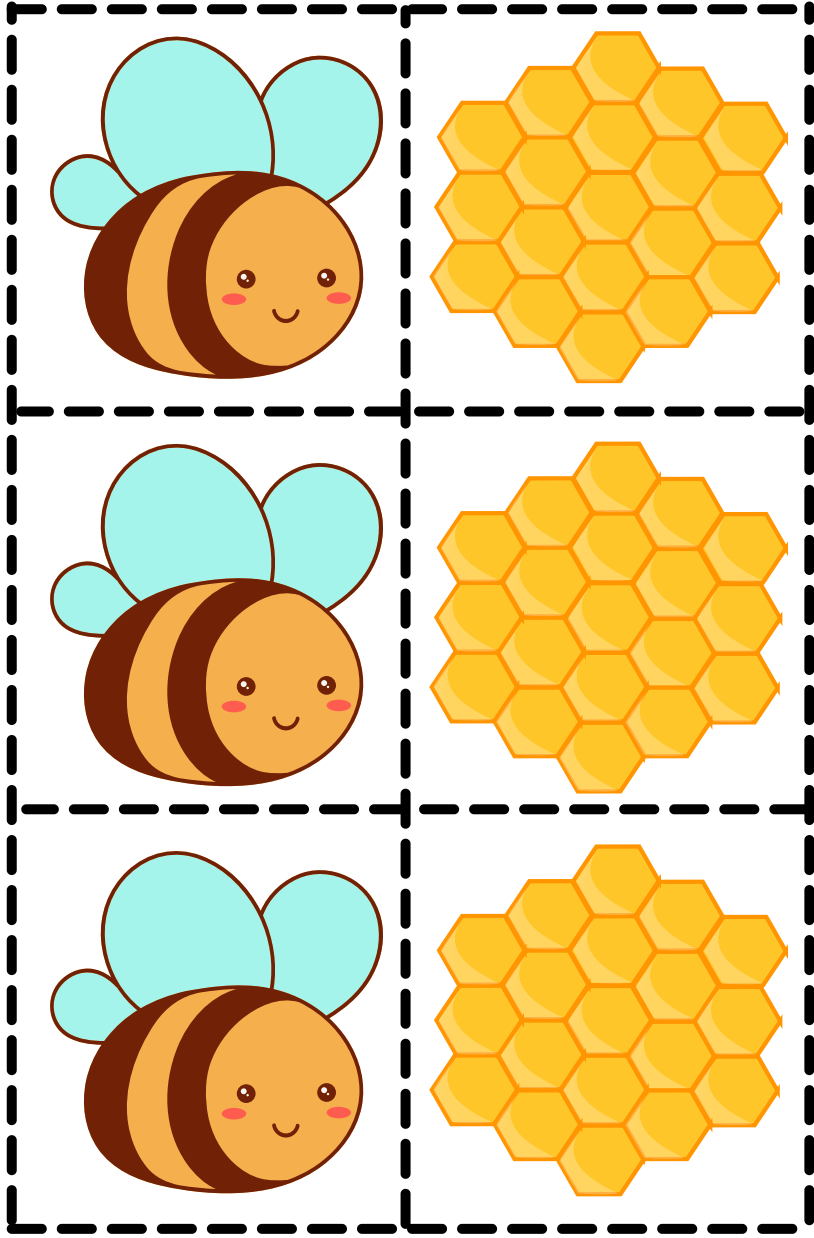








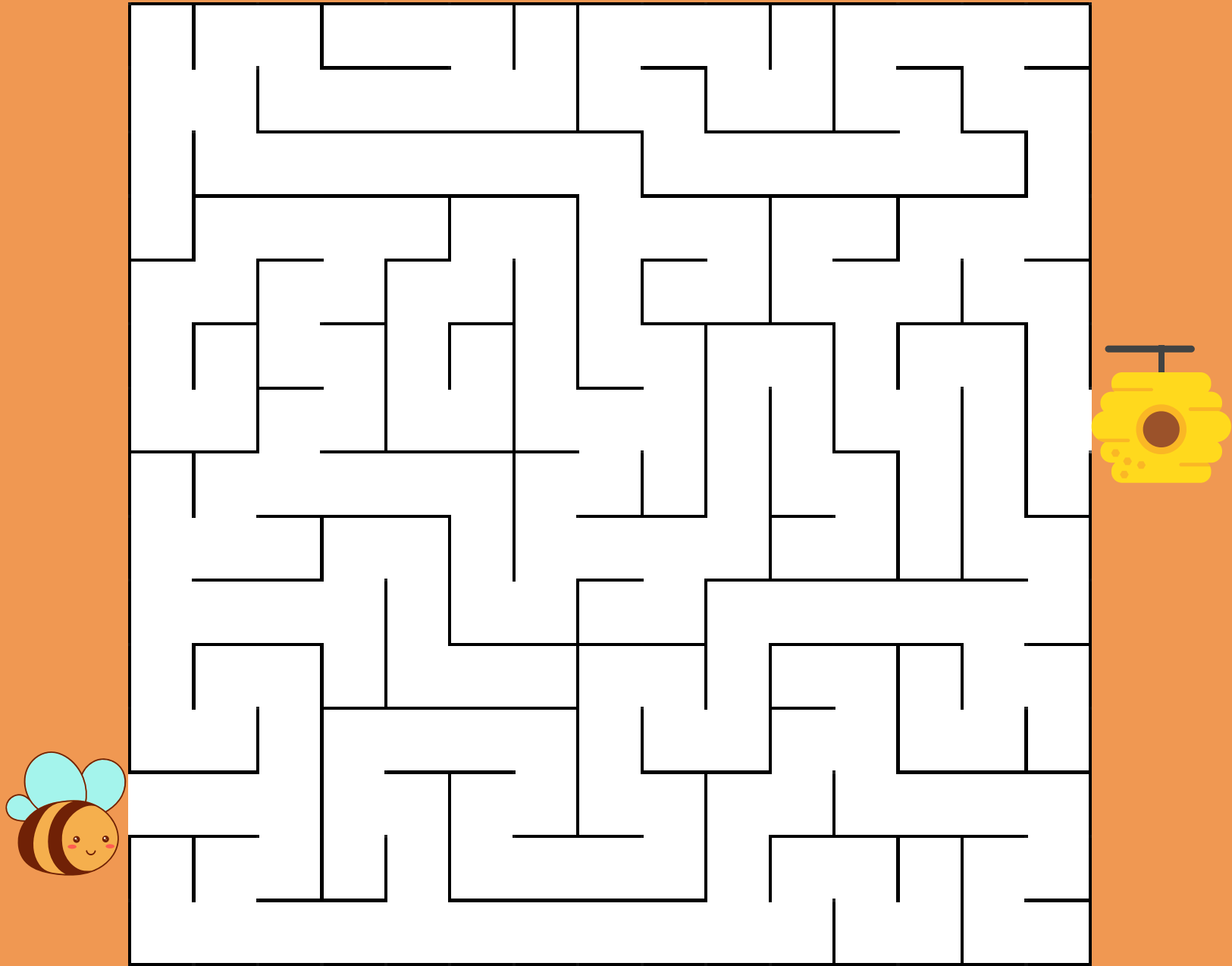




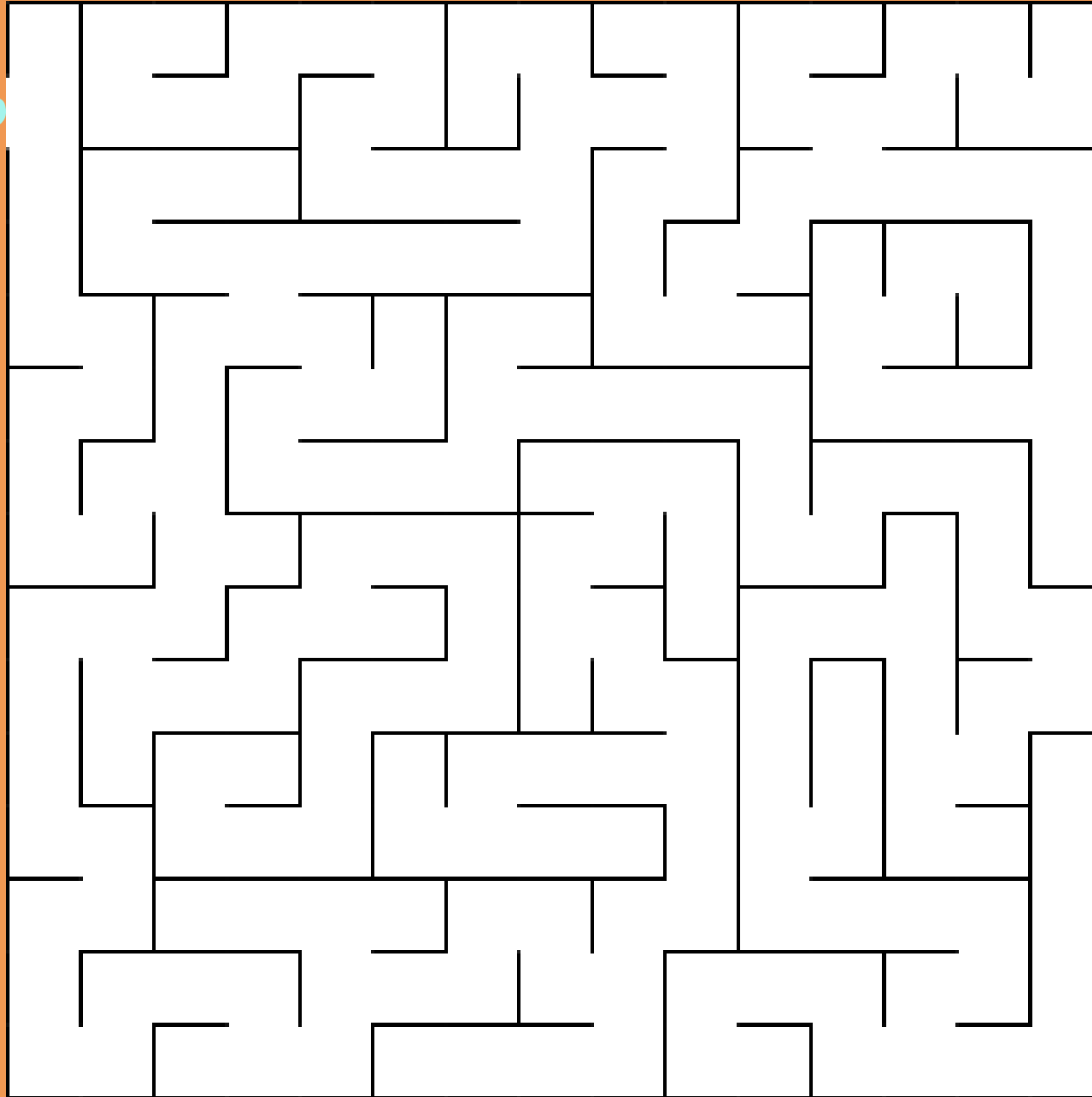
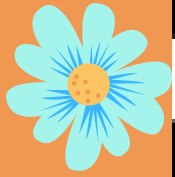
The background is a bright yellow color with a repeating pattern of cartoon bees. Each bee is yellow with black stripes on its abdomen, a black head with two antennae, and four white wings with black veins. The bees are scattered across the page, some facing left and some facing right.

LOS LABERINTOS

Encuentra el camino de la abejita a la colmena

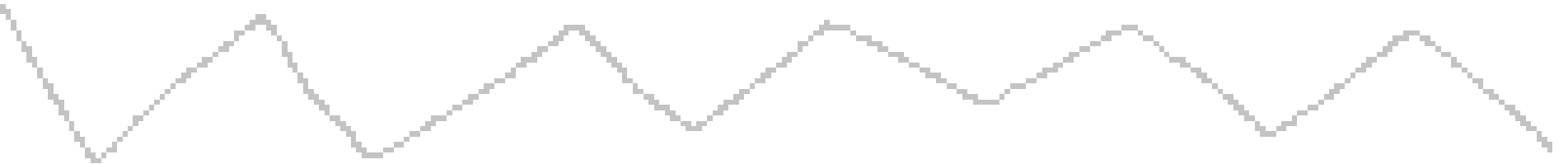
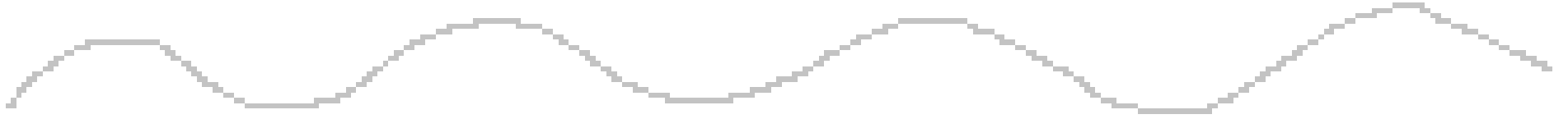
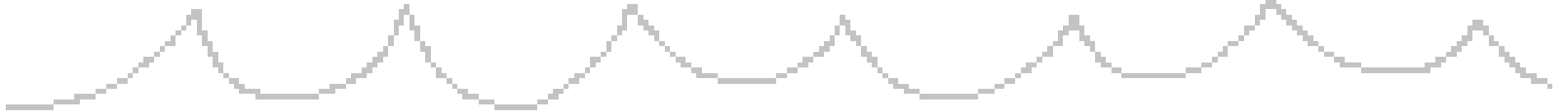
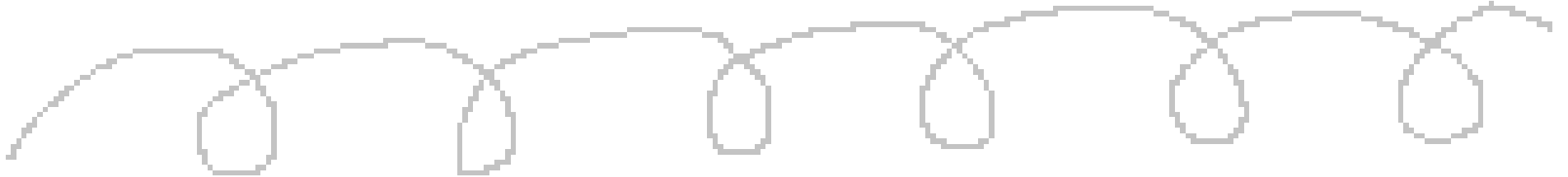


Encuentra el camino de la flor a la miel





LOS TRAZOS



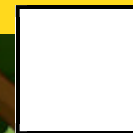
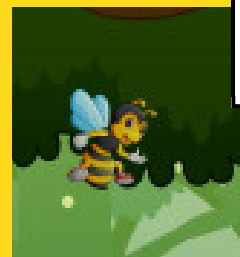
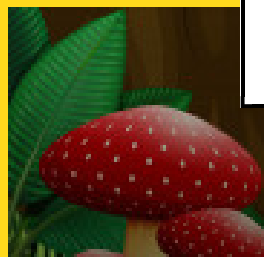
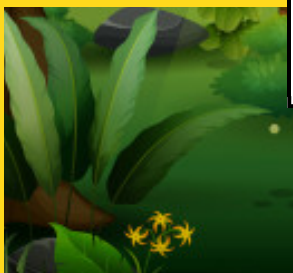
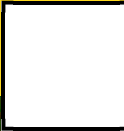
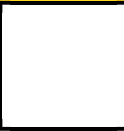
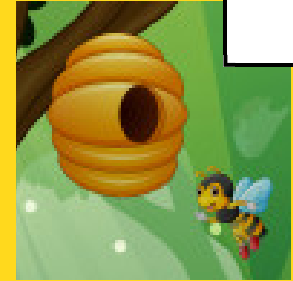
HAZLO SOLIT@





BUSCA Y ENCUENTRA

Busca y rodea las partes de la imagen que se han escapado

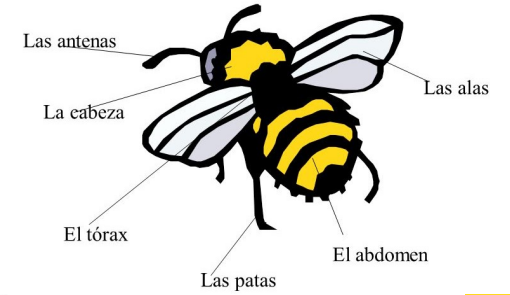




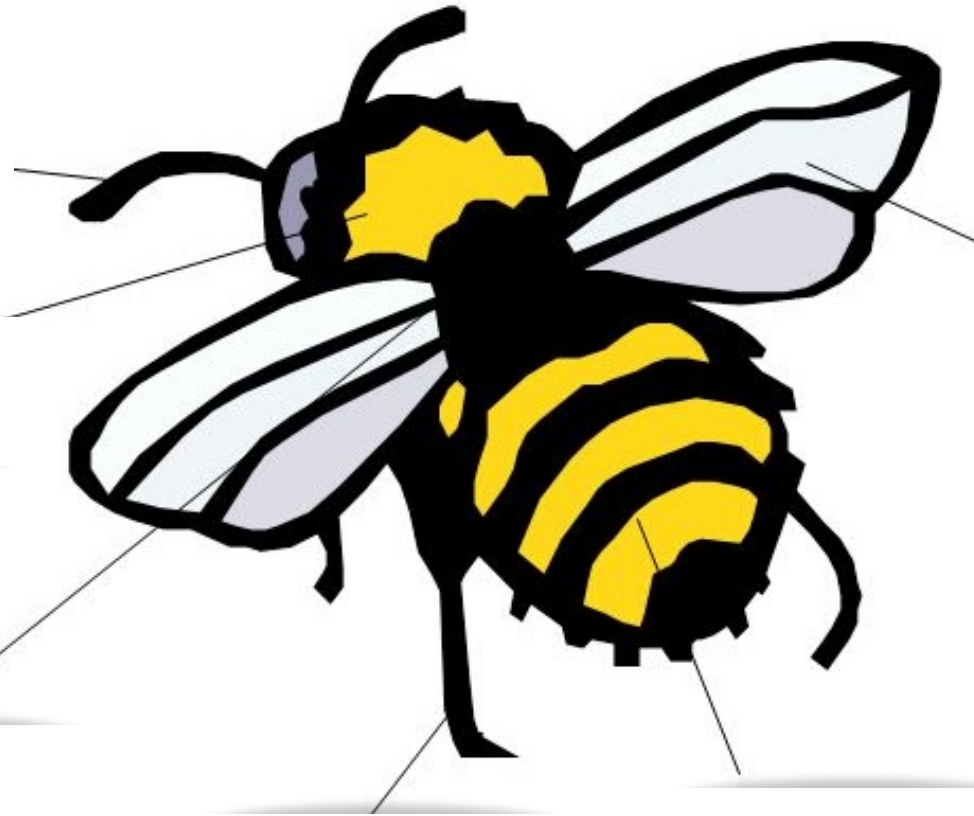
LAS PARTES DE LA ABEJA

Escribe las partes del cuerpo de la abeja

El cuerpo de una abeja



El cuerpo de una abeja





SOPA DE LETRAS

La abeja 1

C	O	L	M	E	N	A
P	F	L	O	R	B	W
S	C	A	M	P	O	P
P	A	B	E	J	A	G
G	F	Z	C	E	R	A
H	F	B	Z	W	H	B
C	M	O	Z	P	M	T

ABEJA

CAMPO

CERA

COLMENA

FLOR

La abeja 2



PANAL

ORUGA

PICAR

MIEL

POLEN

La abeja 3



ZUMBIDO

REINA

PUPA

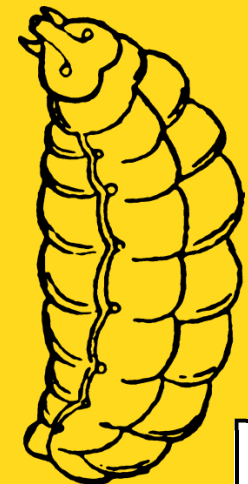
RAYAS

OBRERA

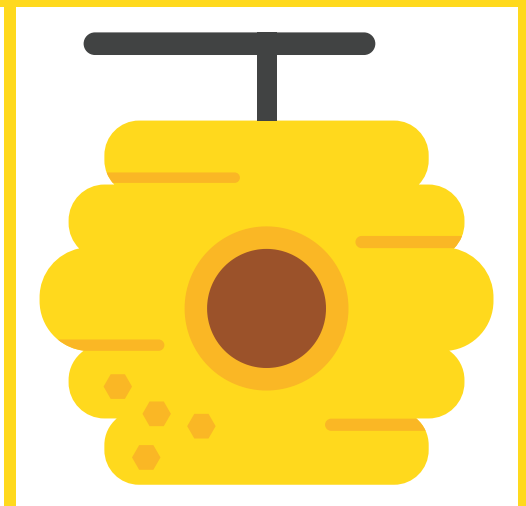
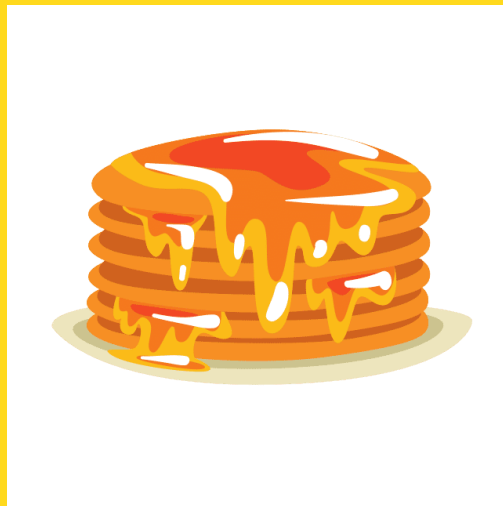
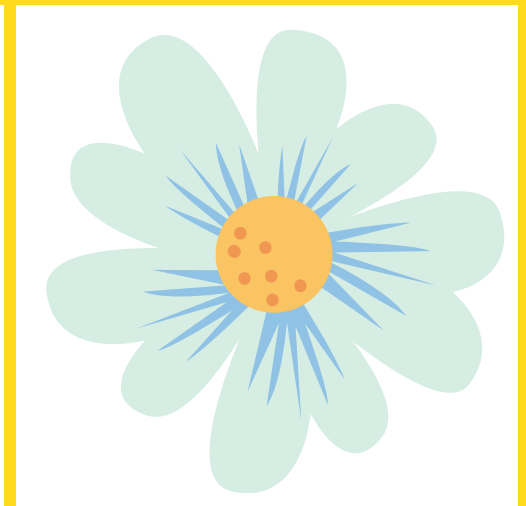
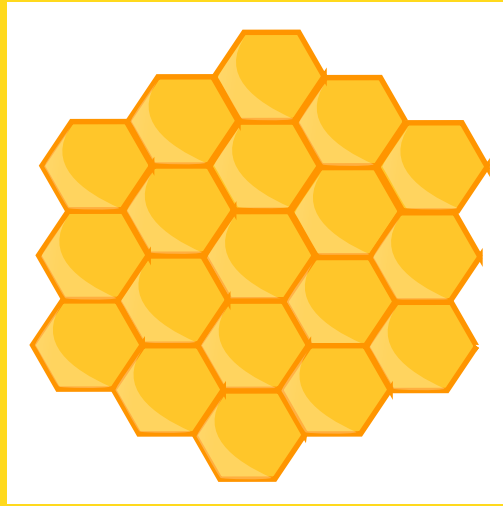


SECUENCIA TEMPORAL

Enumera las imágenes según el ciclo de vida de la abeja



Ordena las fotos del 1 al 4





LAS DIFERENCIAS

ENCUENTRA LAS 5 DIFERENCIAS

