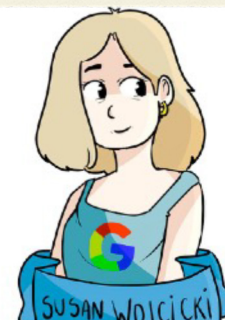


Who is she?



Biographic card

ADA LOVELACE



Ada Lovelace, was a British mathematician, informatic and writer chiefly known for her work on the general purpose calculator named, **The Analytical Engine**. She is considered as **the first female computer programmer**



Matematician



Poet



Informatic



Inventor

SHERYL SANDBERG



Sheryl Sandberg is American economist, author, director and executive. The current operating director of Facebook and founder of Leanin.org. In June 2012 was elected a member of the executive committee, becoming the first woman to take part in this committee in Facebook



writer

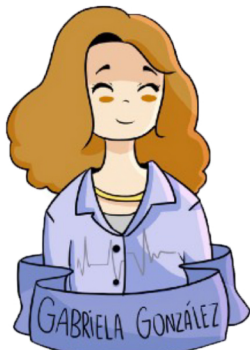


economist



director

GABRIELA GONÁLEZ



Gabriela González, is an Argentinian physicist, investigator and teacher. She's known for her contribution in the gravitational waves research and for being the **spokewoman** for **LIGO** gravitational wave research project



Physicist



Investigator



Teacher

MARY JACKSON



Mary Winston Jackson was a American mathematician and aerospace engineer, who worked for the worked for the **National Advisory Committee for Aeronautics**, which would become what is now **NASA**



Matematician



Informatic



Aerospace engineer

Biographic card



GRACE HOPPER

Grace Hopper was an American military officer with the rank of admiral and a true pioneer in the world of computing. She was the first female programmer to use the Mark I and also the inventor of the concept of a programming language compiler



Mathematician



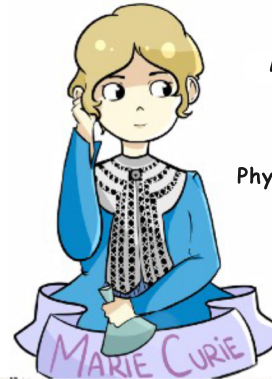
Military officer



Informatic



Physicist



MARIE CURIE

Marie Curie was a French scientist. Pioneering in the field of radioactivity, she was the first person to receive two Nobel prizes in different specialties, Physics and Chemistry, and the first woman to hold the position of professor at the Paris University.



Physicist



Chemist



Investigator



Teacher



EMMY NOETHER

Emmy Noether was a German mathematician, of Jewish descent, a specialist in the theory of invariants and known for her fundamental contributions in the fields of theoretical physics and abstract algebra.



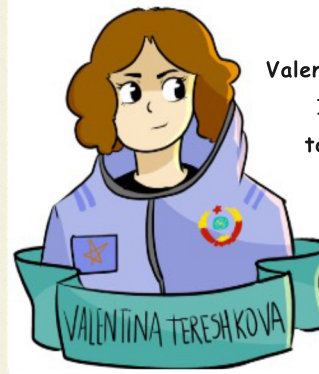
Physicist



Chemist



Teacher



VALENTINA TERESHKOVA

Valentina Tereshkova is a retired Russian astronaut and engineer. In June 16, 1963, she became the first woman to travel to outer space. She completed 48 orbits around the Earth in her three days of space travel



Astronaut



Engineer



Pilot

Biographic card

CHIEN SHIUNG WU



Chien-Shiung Wu was a Chinese-born American physicist, an expert in radioactivity. She is known for carrying out the Wu Experiment, which contradicted the hypothetical law of conservation of parity.



Physicist

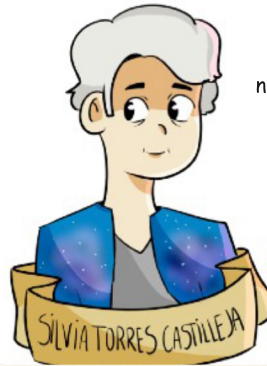


Investigator



Teacher

SILVIA TORRES CASTILLEJA



Silvia Torres Castilleja is a Mexican astronomer notable for having been the first woman from Mexico to obtain a doctorate in astronomy. She is cataloged as one of the most renowned Mexican scientists for her research on interstellar matter.



Physicist



Astronomer



Astrophysicist



Teacher

HEDY LAMARR



Hedy Lamarr was an Austrian film actress and inventor. She was the inventor of the first version of spread spectrum that would allow long-distance wireless communications.



Actress



Inventor

BARBARA MCLINTOCK



Barbara McClintock was an American scientist who received the Nobel Prize in medicine in 1983. McClintock received a doctorate in botany from Cornell University in 1927. There she began her career as a leader in the development of corn cytogenetics.



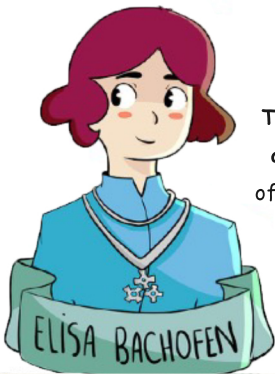
Teacher



Botanist

Biographic card

ELISA BACHOFEN



Elisa Bachofen was an Argentinian engineer and activist. The first woman to graduate in civil engineering in Argentina and in South America in 1918. An active feminist, she was one of the founding members of the National Feminist Union in 1918.

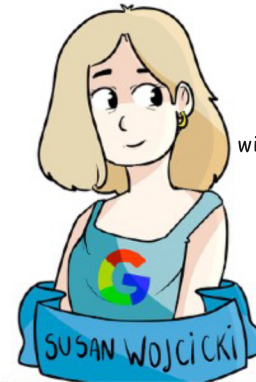


Activist



Engineer

SUSAN WOJCICKI



Susan Wojcicki is an American businesswoman and historian of Polish descent. CEO of Youtube. She graduated with honors in History and Literature from Harvard University, and also has a master's degree in economics from the University of California.



Historian



Economist



Director

MARGARET HAMILTON



Margaret Hamilton was director of the Software Engineering Division at MIT, where with her team she developed "on-board" navigation software for the Apollo space program. In 1986, she became the founder and CEO of Hamilton Technologies in Cambridge, Massachusetts.



Mathematician



Computer specialist



Director

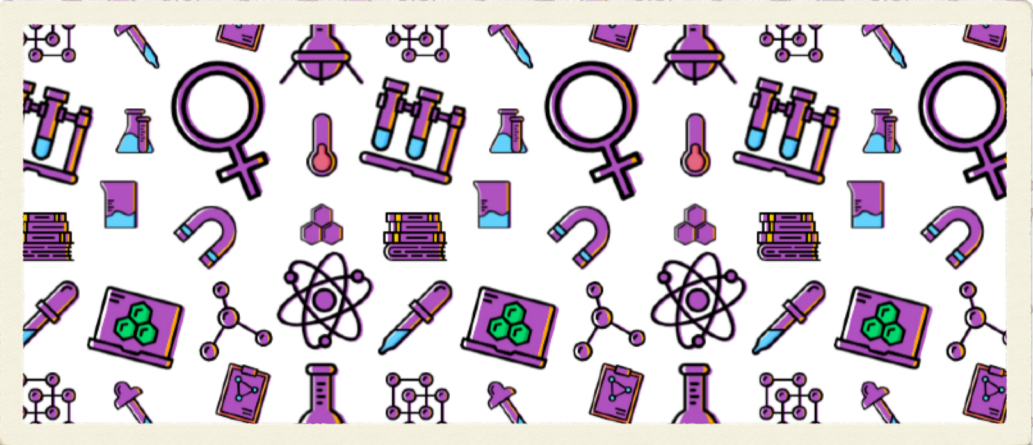
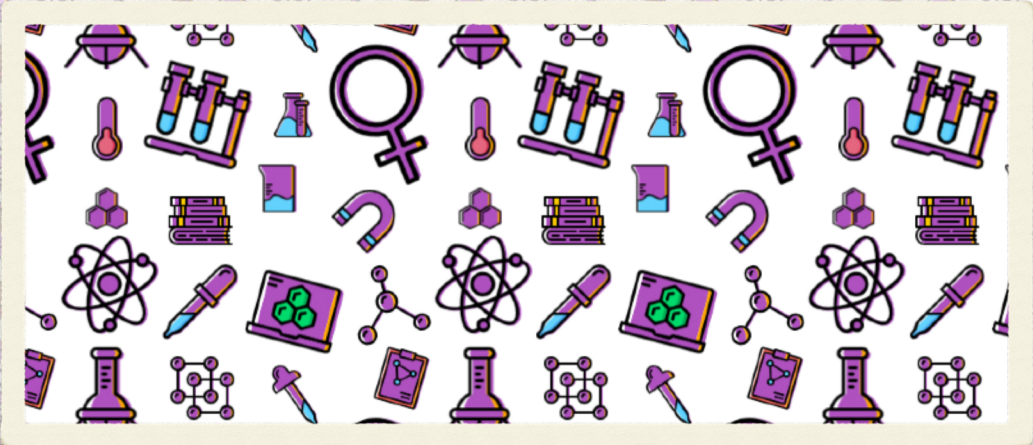


Engineer

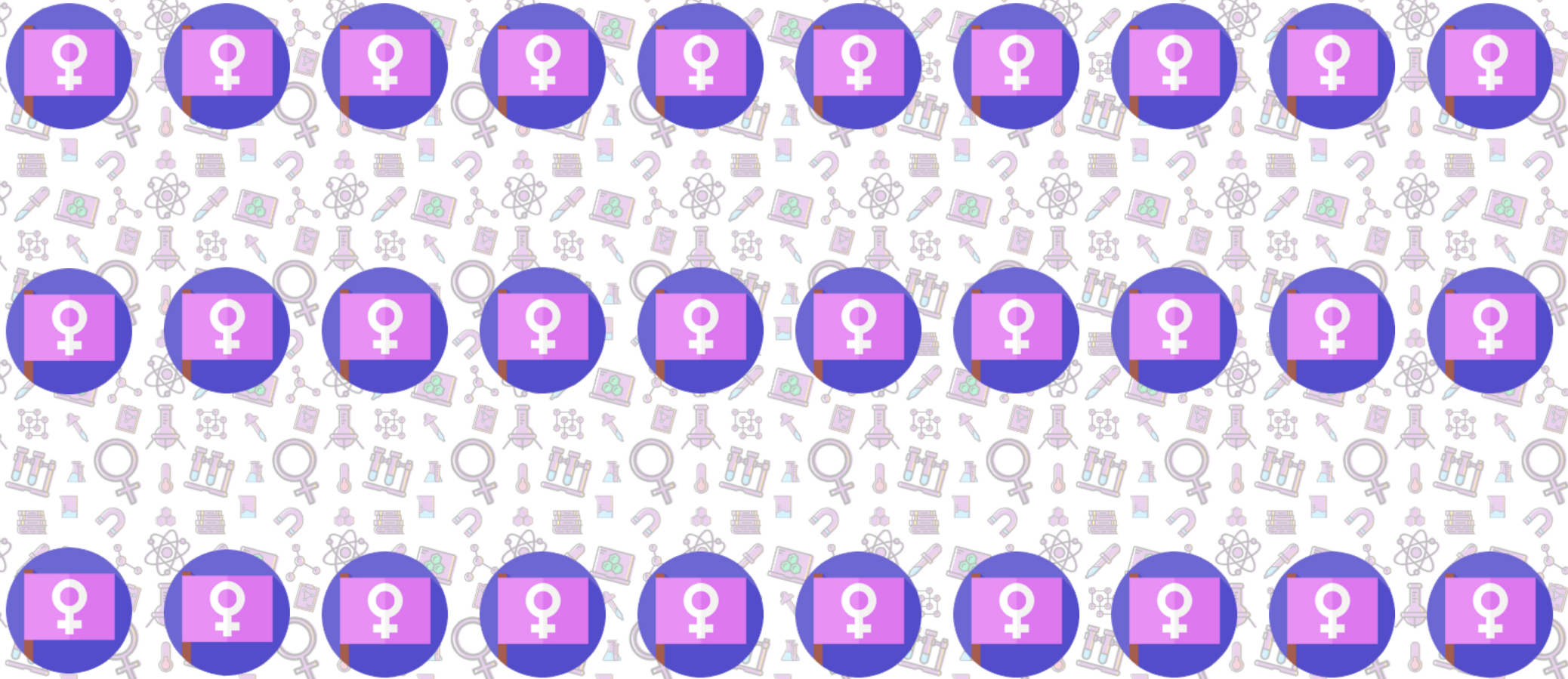
Reverso del tablero

¿Quién es ella?

Reverso de las tarjetas biográficas



Fichas



Instrucciones

Contenido del recurso



- ✓ 1 tablero de ¿Quién es ella?
- ✓ 15 tarjetas biográficas de mujeres científicas
- ✓ Fichas para tapar personajes

Objetivo del juego



- ✓ Realizar preguntas que tengan como respuesta sí o no.
- ✓ Adivinar la mujer científica que ha elegido el adversario/a.

Preparación del juego



- ✓ Imprime 2 tableros de ¿Quién es ella?. Si quiere puedes plastificarlos junto con los reversos.
- ✓ Imprime 2 juegos de tarjetas biográficas. Si quieres puedes plastificarlas junto con los reversos.
- ✓ Imprime las fichas para tapar personajes. Puedes plastificarlas o si quieres puedes utilizar gomets en lugar de fichas.

Antes de empezar a jugar



- ✓ Sienta a los adversarios/as uno frente al otro.
- ✓ Baraja el paquete de tarjetas biográficas.
- ✓ Luego cada jugador coge una tarjeta sin que el adversario/a la vea.
- ✓ Mira bien la tarjeta y colócala boca abajo para evitar que el otro jugador/a la pueda ver.
- ✓ Evita que durante el juego el otro jugador/a no vea tu tarjeta.
- ✓ Coloca el resto de tarjetas de mujeres científicas boca abajo fuera del tablero de juego.

¡A jugar!



- ✓ Empieza el jugador/a más joven.
- ✓ Realiza preguntas que puedan ser contestadas con sí o no.
- ✓ Por ejemplo: ¿Tu científica tiene el pelo negro?
 - Si la respuesta es SÍ: coloca una ficha o gomet en todas las científicas que no tengan el pelo negro.
 - Si la respuesta es NO: coloca una ficha o gomet en las científicas que tengan el pelo negro.
- ✓ Continúa haciendo preguntas hasta que uno de los jugadores/as crea que puede adivinar quién es la científica de su adversario/a.

¿Quién gana?



- ✓ Cuando creas saber quién es la científica de tu adversario/a prueba suerte.
- ✓ En tu turno en lugar de hacer una pregunta intenta adivinarla.
- ✓ **IMPORTANTE**, no se puede hacer pregunta y adivinar en el mismo turno.
 - Si no aciertas la científica de tu adversario, ¡has perdido la partida!
 - Si aciertas, ¡Enhorabuena, has ganado!

Atribuciones



La descarga de este recurso incluye una licencia de uso limitado de EL PROYECTOR DE CLASE.

LICENCIA

Atribución – Usted debe dar **crédito de manera adecuada**, brindar un enlace a la licencia, e **indicar si se han realizado cambios**. Puede hacerlo en cualquier forma razonable, pero no de forma tal que sugiera que usted o su uso tienen el apoyo del licenciante.

NoComercial – Usted no puede hacer uso del material con **propósitos comerciales**.

CompartirIgual – Si mezcla, transforma o crea a partir del material, debe distribuir su contribución bajo la **misma licencia** del original

IMÁGENES

-<https://luailustrada.tumblr.com/> → imágenes con algunos cambios

-<https://www.flaticon.com/>

-<https://www.teacherspayteachers.com/Product/Clever-Cat-Creations-Terms-of-Use-3688683>

TEXTO

<https://es.wikipedia.org/>

FUENTES

<https://fonts.google.com/>